

10-21 dB DIRECTIONAL COUPLERS

ZDC SERIES



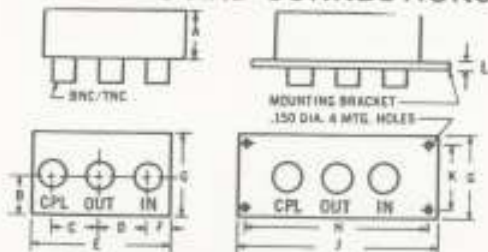
MODEL	Freq. Range (MHz)	Coupling (dB)	Z (Ω)	COST
ZDC-10-1	0.5 - 500	11.5	50	\$29.95 (4-24)
ZDC-10-2	250 - 1000	10.5	50	\$37.95 (4-24)
ZDC-15-6	0.01 - 35	15.0	50	\$37.95 (4-24)
ZDC-20-1	25 - 400	21.0	50	\$37.95 (4-24)
ZDC-20-3	0.2 - 250	19.5	50	\$29.95 (4-24)
ZDC-10-1-75	1 - 250	10.5	75	\$29.95 (4-24)
ZDC-15-6-75	0.02 - 35	14.5	75	\$38.95 (4-24)
ZDC-20-3-75	1 - 150	19.5	75	\$30.95 (4-24)
ZDC-2375	55 - 85	11.5	75	\$38.95 (4-24)

DESCRIPTION — The ZDC series directional couplers are economically priced while covering the frequency range from 10 kHz to 1000 MHz. They offer main-line loss as low as 0.1 dB and high directivity of up to 35 dB. A wide selection of coupling ratios are available and exceptional unit to unit matched performance is standard.

Available with BNC or TNC connectors, the ZDC series is housed in a die-cast aluminum case. The case is finished with a blue-baked enamel per Federal Standard 595 #25109 over phosphoric etch per MIL-C-15328A.

High reliability is associated with every MCL unit. Every production run is 100% tested and every unit must pass our rigid inspection and high quality standards. Naturally, our one year guarantee applies to these units.

DIMENSIONS AND CONNECTIONS



	A	B	C	D	E	F	G	H	J	K	L
IN.	1.15	.63	.750	.730	2.25	.385	1.40	2.95	3.25	1.10	0.08
MM	29	16	19	18.5	57	9.7	35.5	74.9	82.5	28	2.0

MOUNTING BRACKET AVAILABLE ON REQUEST. Add suffix B to part number and \$1.50 to unit cost.

CONNECTORS: BNC standard. TNC on request (no charge).

WEIGHT 74.0 grams 2.6 ounces

FEATURES

- Broadband, 10 KHz to 1 GHz
- Low Insertion Loss, typically less than 0.5 dB
- High Directivity, typically better than 30 dB
- Hermetically Sealed & RFI Shielded
- Connectors, available with BNC or TNC
- Mounting, option, available with bracket
- Compact, 2.25" width, 1.4" height, 1.15" depth
- High Reliability, 100% tested, one year guarantee
- Low Cost, as little as \$29.95 in small quantity

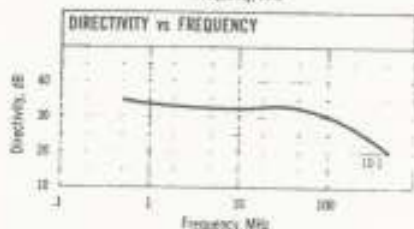
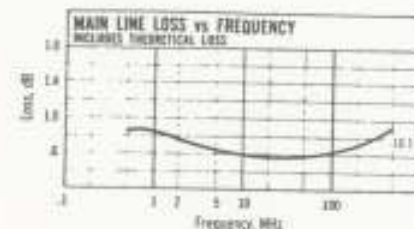
APPLICATIONS

- Measure incident and reflected power to determine VSWR
- Signal sampling
- S parameter measurement
- Signal injection
- Signal generator/oscillator leveling
- Power flow monitoring

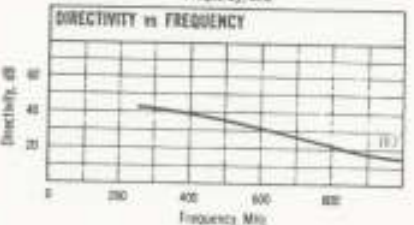
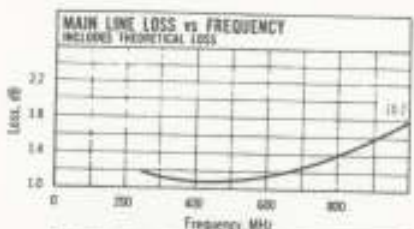
ABSOLUTE MAXIMUM RATINGS

- Operating and Storage Temp. -55°C to +100°C
- Environmental Specifications: See Index Page

MODEL ZDC-10-1



MODEL ZDC-10-2



Mini-Circuits 2625 E. 14th St., Brooklyn, NY 11235 (212) 769-0200/Dom. Telex 125460/Int'l. Telex 620156

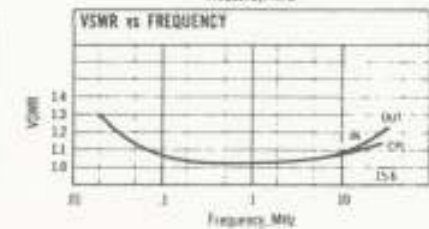
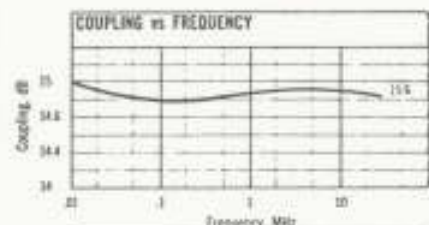
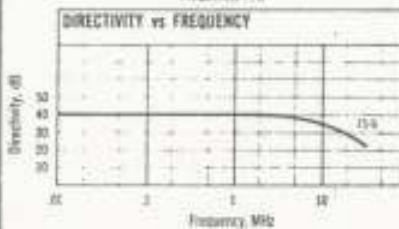
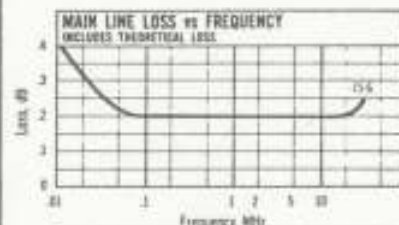
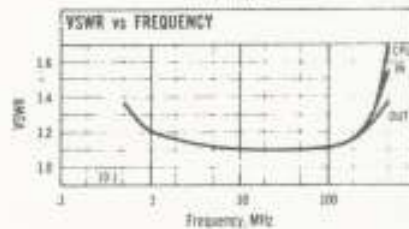
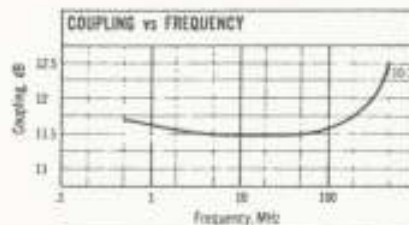
ZDC Series
10 KHz to 1000 MHz

Mini-Circuits

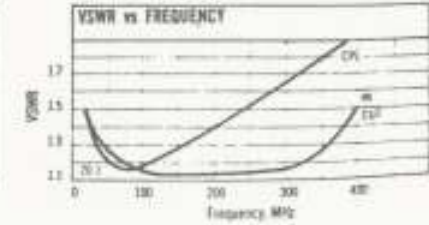
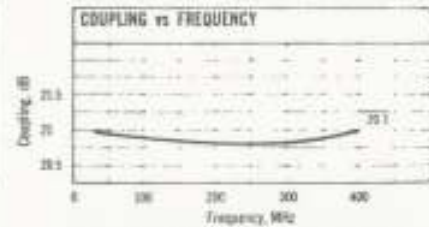
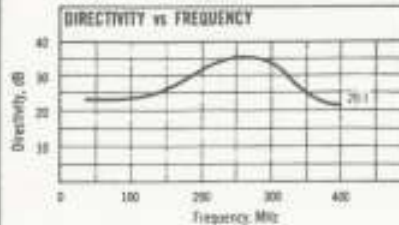
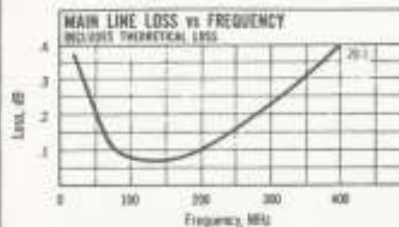
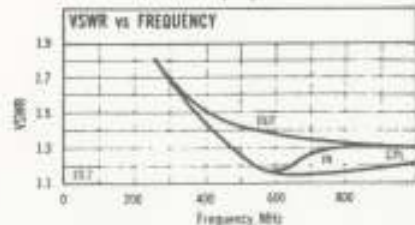
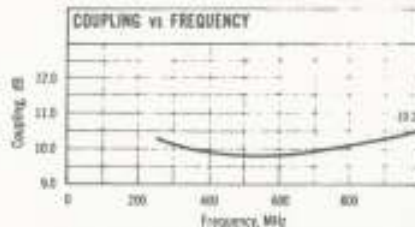
Model No.	Frequency Range MHz	Coupling, dB (Input to Coupled Port)	Coupling Flatness dB	VSWR (Typ.)	Directivity, dB			Main Line Loss, dB (Includes Theoretical Power Split Loss)			Input Power, W	
					Over Freq. Band	Typ.	Min.	Over Freq. Band	Typ.	Max.	Total Range	Lower Band Edge to One Decade Higher
					Lower range†	Mid range	Upper range†	One octave from band edge	Total range			
ZDC-10-1	0.5-500	11.5±0.5	±0.6	1.2	Lower range† Mid range Upper range†	32 32 22	25 25 15	One octave from band edge Total range	0.65 0.85	1.0 1.3	3	1.5
ZDC-10-2	250-1000	10.5±0.5	±0.5	1.5	250-400 MHz 400-800 MHz 800-1000 MHz	40 30 20	30 20 15	250-600 MHz 600-1000 MHz	1.1 1.6	1.4 1.9	5	—
ZDC-15-6	.01-35	15±0.5	±0.5	1.15	Lower range† Mid range Upper range†	38 35 28	30 25 20	One octave from band edge Total range	0.2 0.3	0.4 0.6	4	2
ZDC-20-1	25-400	21±0.75	±0.5	1.25	25-150 MHz 150-300 MHz 300-400 MHz	25 35 25	20 25 20	25-50 MHz 50-300 MHz 300-400 MHz	0.2 0.1 0.15	0.5 0.4 0.6	5	3

† Lower band edge to one decade higher. Upper band edge to one octave lower.

MODEL ZDC-15-6



MODEL ZDC-20-1



PROMPT SERVICE / ONE WEEK DELIVERY

Mini-Circuits